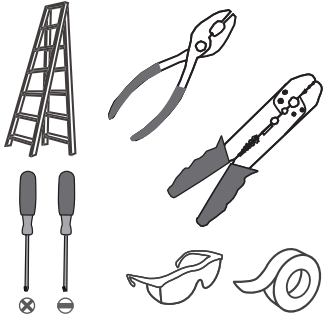


**Tools Required**



**Light Source**

23W  
**LED**

**Warnings and Cautions**

Turn off the electricity at the circuit breaker before installation.  
Consult a licensed electrician if in doubt about installation.

**Package Contents**

**Preparation:** Identify and inspect all parts before beginning the installation.

Missing or damaged parts? Contact your original place of purchase.

**PARTS BAG**



**A** Crossbar  
x 1



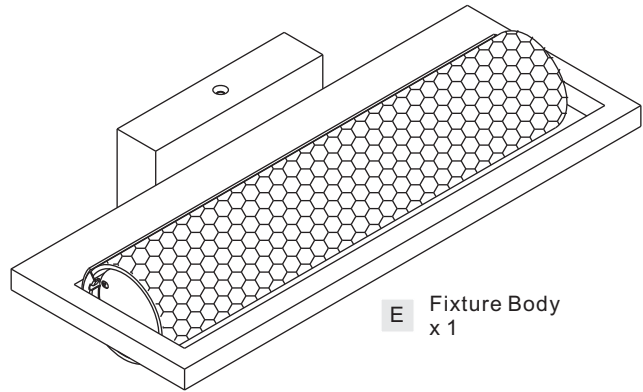
**B** Lock Screw  
x 2



**C** Outlet Box Screw  
x 2



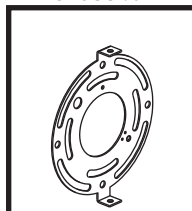
**D** Wire Connector  
x 3



**E** Fixture Body  
x 1

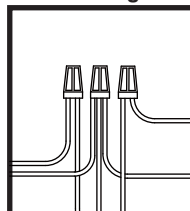
**Table of Contents**

**Crossbar**



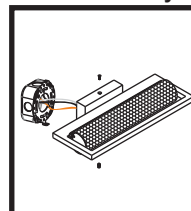
**STEP 1**

**Wiring**



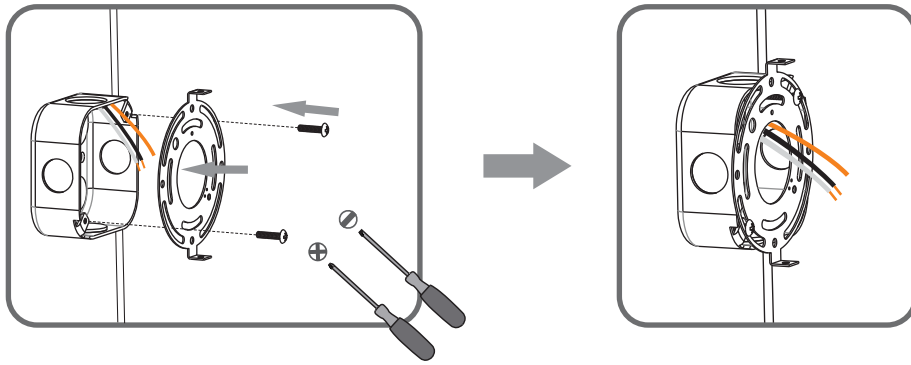
**STEP 2**

**Fixture Body**

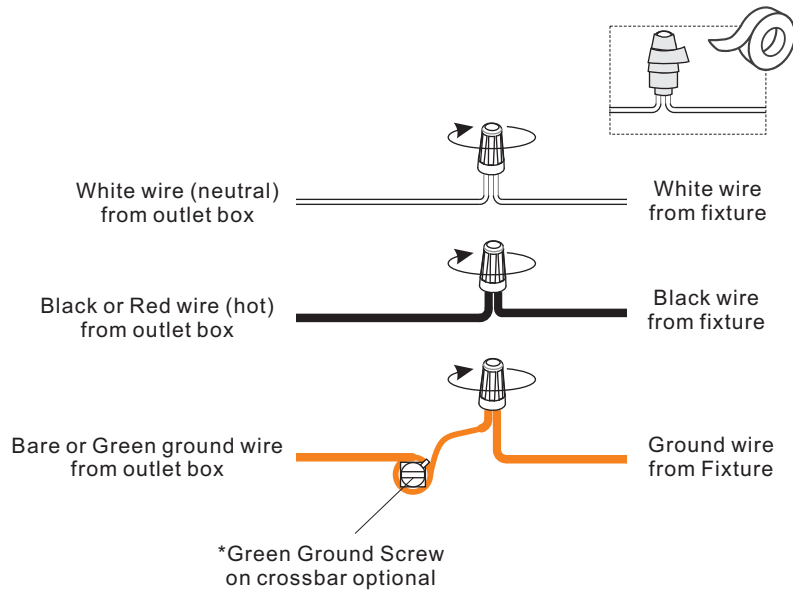


**STEP 3**

### STEP 1



### STEP 2



### STEP 3

