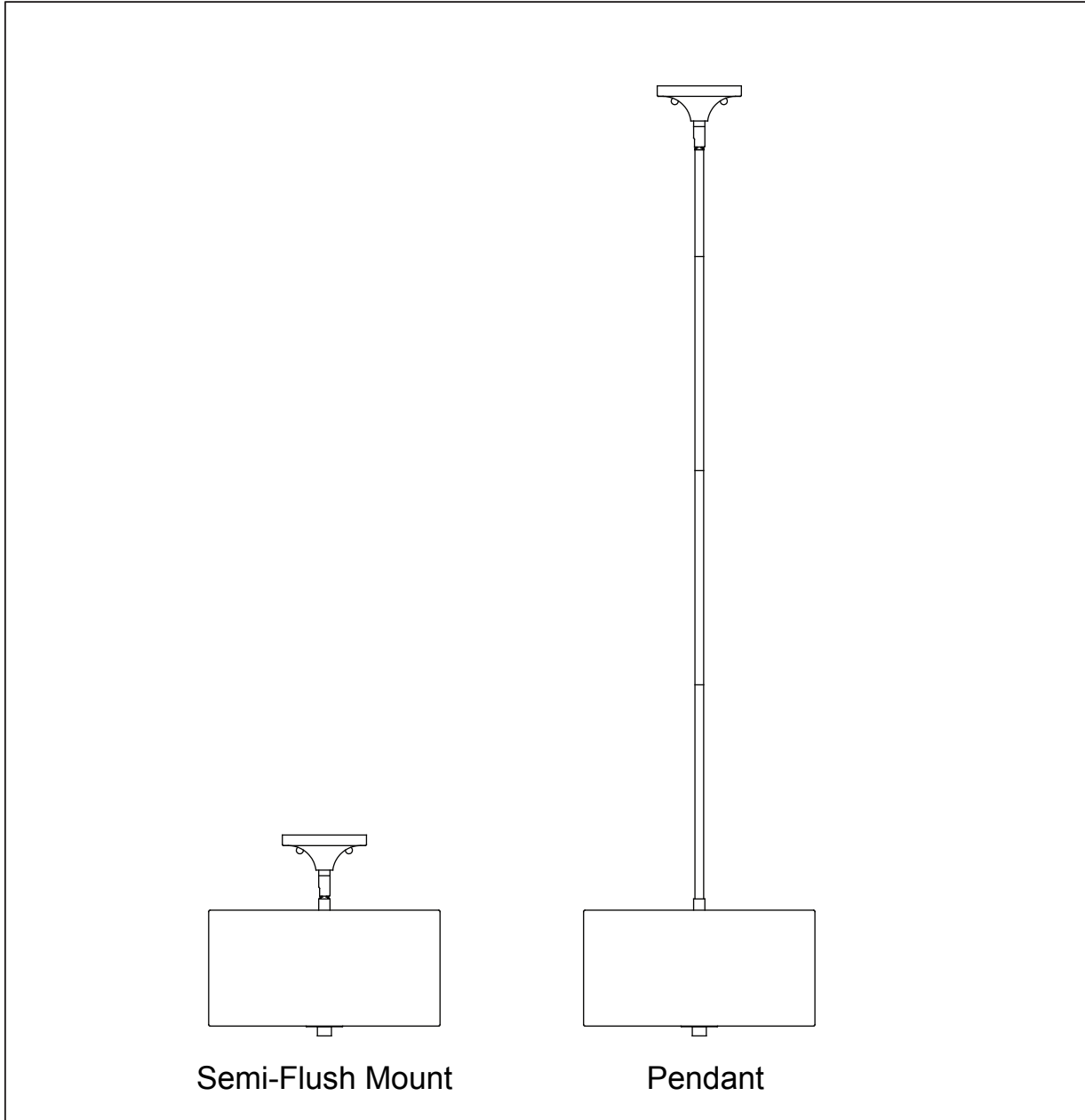




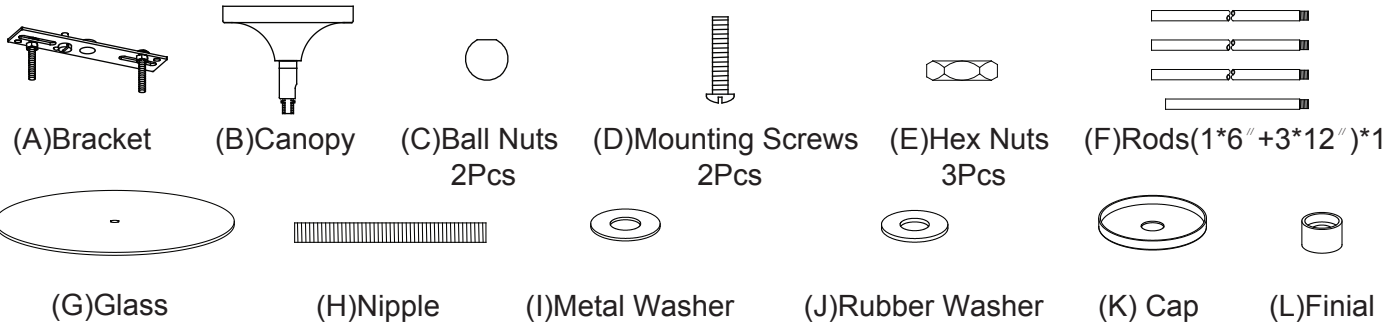
PRODUCT NAME: Bongo 2-Light Pendant / Semi-Flush Mount  
ITEM NUMBER: 10011

Please consult your electrician for hanging fixture and wiring.

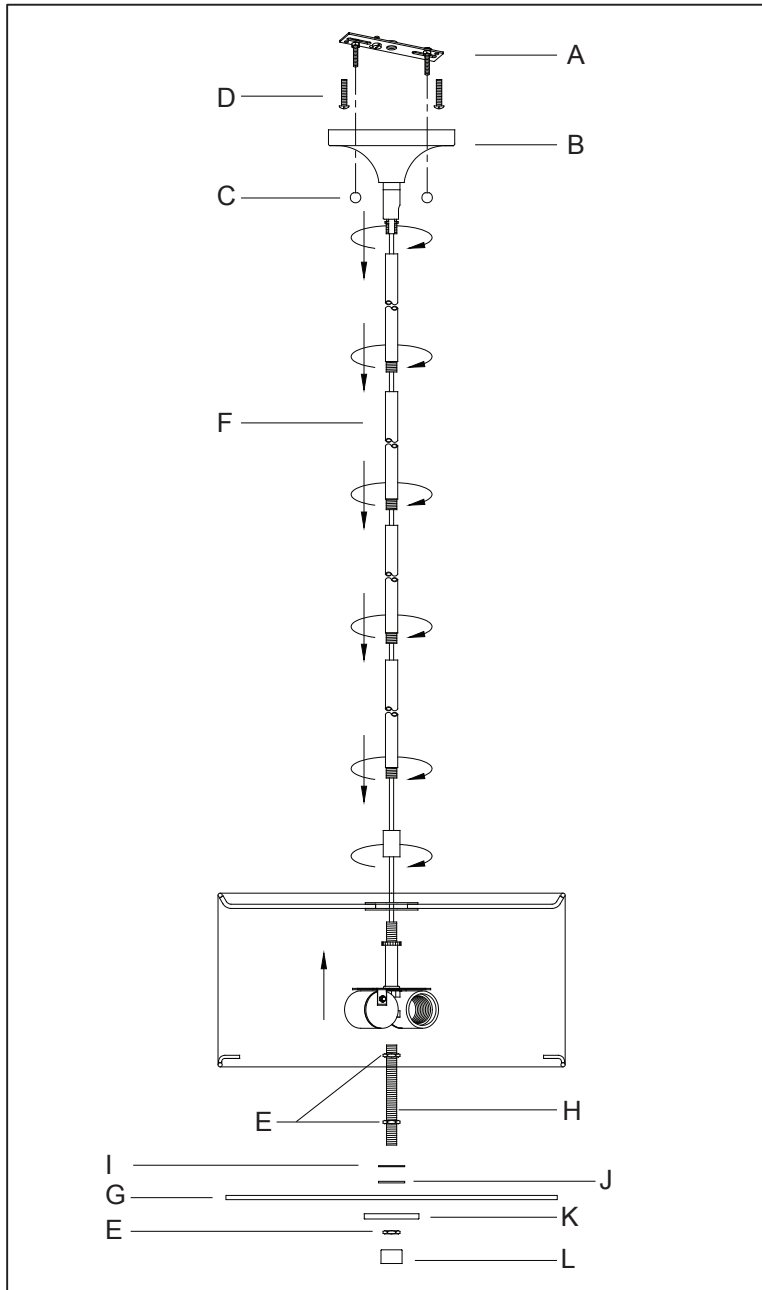


Bulb (not included): 2x60W Medium Base Bulb

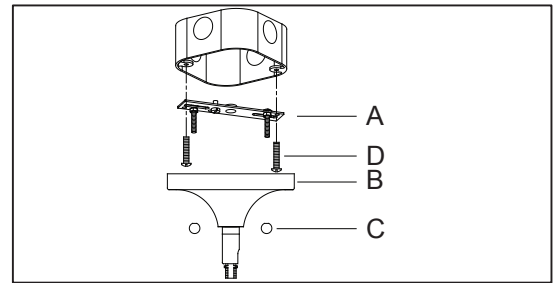
**IMPORTANT:** Turn off the power at the main fuse or circuit breaker box before starting installation



Locate all hardware & components before discarding packaging

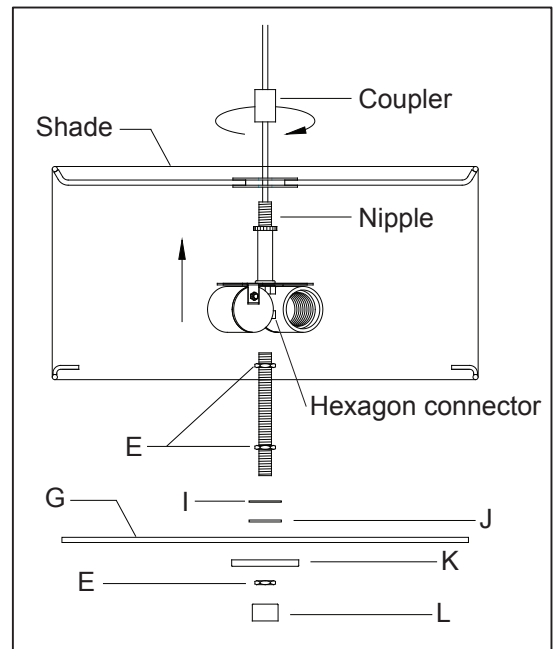


1.)



Step1: Remove mounting bracket from fixture and install to electrical box.

2.)

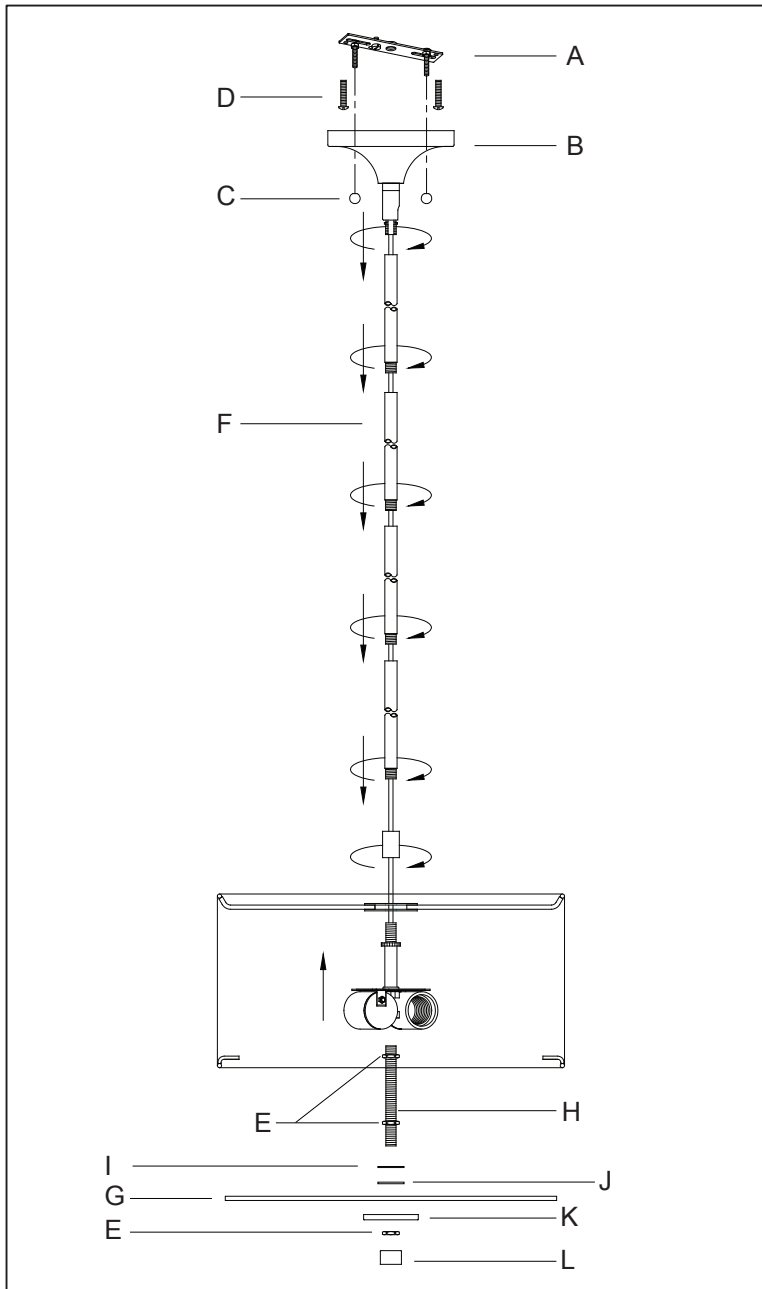


Step2: Place shade on the Nipple and tighten with the Coupler. Thread the nipple into Hexagon connector, then secured by hex nut. Put the metal washer and rubber washer on the nipple, adjust them close to the glass diffuser by the hex nut, then put the glass diffuser on the shade spider, and put the Cap close to the glass diffuser, then secured by hex nut and finial.

**Cleaning & Care:**  
Clean with soft cloth and a mild detergent.  
Do not use abrasive cleaner.

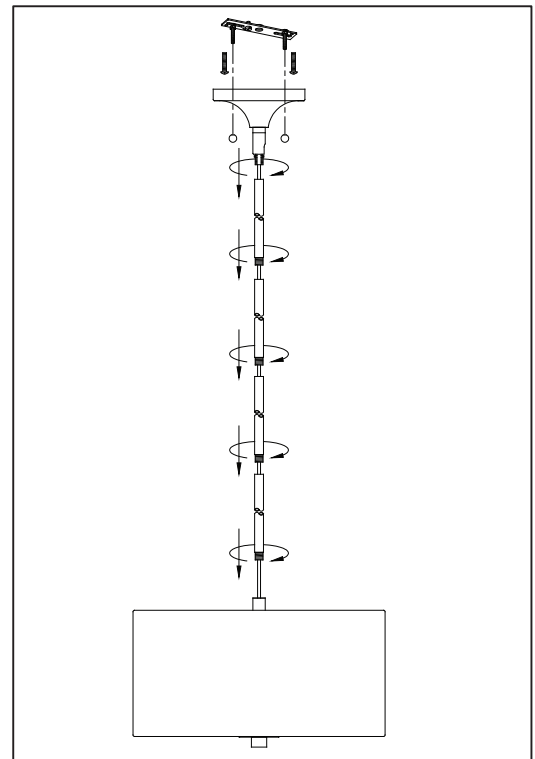
**IMPORTANT:** Turn off the power at the main fuse or circuit breaker box before starting installation

Locate all hardware & components before discarding packaging



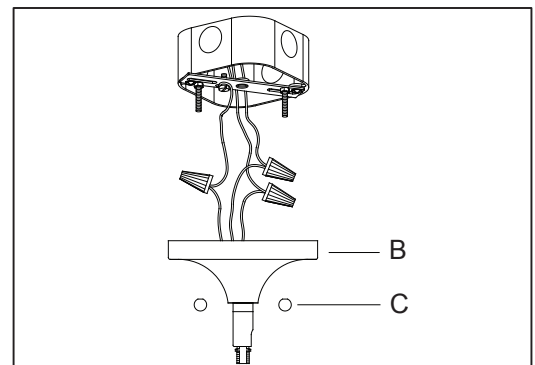
**Cleaning & Care:**  
Clean with soft cloth and a mild detergent.  
Do not use abrasive cleaner.

3.)



Step3: Run wire through stems and combine stem lengths to meet desired mounting height.

4.)



Step4: Wire fixture to wires in outlet box. Copper wire is for Ground. Attach canopy to mounting bracket and tighten with ball nuts.