

# 601432-LED

Specification Sheet

## Wall Sconce

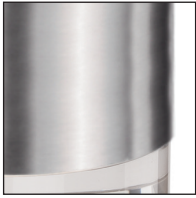


CH - Chrome

PROJECT						
DATE		TYPE				
Voltage	Watt	LED Lumens	Delivered Lumens	Finish(es)	Color Temp 3000K	
120V	19W	1200lm	705lm	CH- Chrome	CRI (Ra	>90
120V	19W	1200lm	705lm	BN - Brushed Nickel	Dimming	100% - 10%
120V	19W	1200lm	705lm*	BK - Black	Rated Life	50,000 hours
120V	19W	1200lm	TBD	WH - White		

\*Preliminary figures

### Other Finishes:



BN - Brushed Nickel



WH - White



BK - Black

### Product Descriptions

LED cylinder shaped updown wall sconce with clear acrylic discs. Metal details in white, black, brushed nickel or chrome finish, and is equipped with our powerful 120V AC LED technology, fully dimmable.

### Product Details

High system efficacy

Low total life cycle cost

ETL Listed

5-year LED and fixture warranty

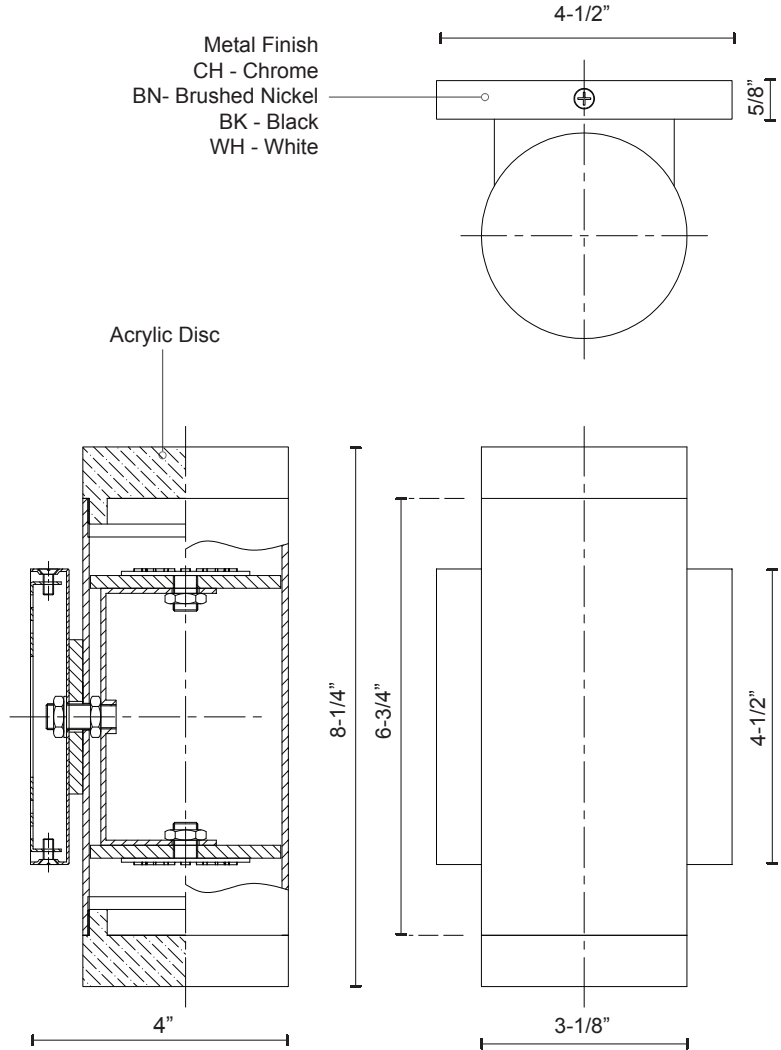
Complete warranty terms located at:

[www.kuzcolighting.com/warranty](http://www.kuzcolighting.com/warranty)

Utilizes our patented Driverless LED Light Engine technology - connects directly to AC, no external driver needed.

Dimmable (not included)

Custom options available



Fixture Weight:

Canopy Dimensions:

L: 4-1/2" H: 4-1/2" W: 5/8"

Comments:

**KUZCO**  
LIGHTING

20170710

19054 28th Avenue  
Surrey, BC, Canada  
V3Z 6M3

T: 604 538 7162  
F: 604 538 7196  
W: Kuzcolighting.com

