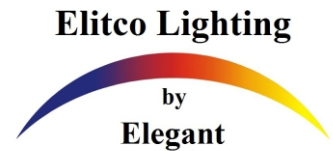


Elitco Lighting

Headquarter: 500-550 E. Erie Avenue Philadelphia, PA 19134
Toll-Free:1-888-388-3390 Tel:(215)423-8880 Fax:(215)423-8882



INSTALLATION INSTRUCTIONS

MODEL: P803

READ THIS FIRST

KEEP THIS instruction

Please read this instruction carefully. Luminaires must be installed in accordance with the National Electrical Code (NEC) and local codes. Failure to do so will void the warranty and may result in serious injury and/or damage to the luminaire.

SAFETY WARNING: Luminaire can become very hot depending on lamp wattage used. Lens and metal around lamp can become hot enough to blister hands. Particular care should be taken not to locate luminaires where small children can reach them if high wattage lamps are used.

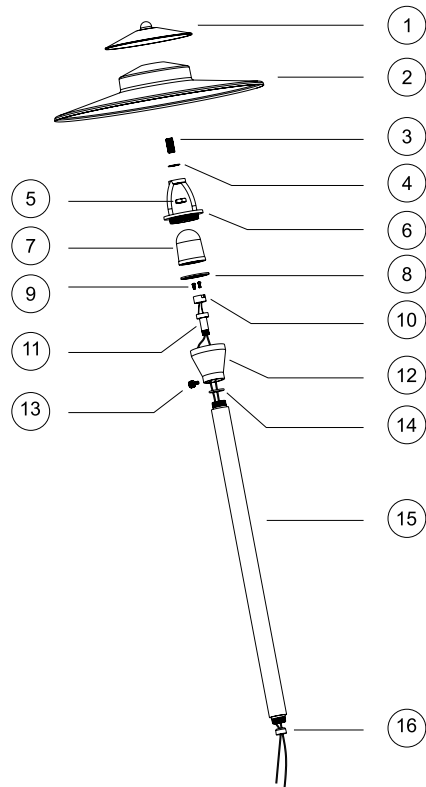
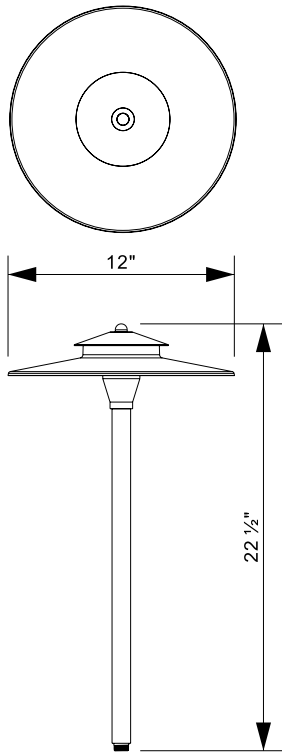
NOTE: LUMINAIRES ARE NOT TO BE INSTALLED WITHIN 10 FT. (3.05M) OF A POOL OR SPA. SECONDARY CABLE IS NOT TO BE BURIED MORE THAN 6". WHEN USING MULTIPLE LUMINAIRES, LOAD IS NOT TO EXCEED THE TOTAL WATTS OF TRANSFORMER RATING. DO NOT USE EXTENSION CORDS ON POWER UNITS.

NOTE: Always use UL recognized wire connectors for connections. LUMINAIRE IS FOR ABOVE GROUND INSTALLATION ONLY.

ASSEMBLY AND INSTALLATION

1. Determine the desired location for mounting Luminaires.
2. At desired location, hammer the spike into the ground. To avoid damage to spike, place a board on the top of the spike while hammering. If the ground is hard and the spike is difficult to install, make a crosscut in ground using a flat shovel.
3. Clear away area in the ground at the wireway slot in the top of the spike.
4. Lay 12V cable into the wireway slot and screw luminaire into the spike. Aim luminaire in the desired direction.
5. Screw out the Shade Connector out of the stem. Install the G4 lamp into the socket. And then screw the Shade Connector back to the stem.
6. TURN OFF POWER.
7. Make wire connections using approved wiring connection method(not supplied).

FIXTURE DETAILS:



1. TOP SHADE 2. BOTTOM SHADE 3. SHADE SCREW 4. WASHER 5. HEX NUT 6. HARP
7. GLASS DOME 8. GLASS GASKET 9. SOCKET SCREWS 10. SOCKET 11. BRACKET 12. CONE
13. SCREW 14. O-RING 15. STEM 16. RUBBER PLUG

IMPORTANT SAFETY INSTRUCTIONS THE LIGHTED LAMP IS HOT!!

WARNING: TO REDUCE THE RISK OF FIRE, OR INJURY TO PERSONS:

1. Turn off/unplug and allow to cool before replacing the lamp.
2. Lamps get hot quickly! Contact only switch/plug when turning on.
3. Do not touch the hot lens, guard or enclosure.
4. Keep lamp away from material that may burn.
5. Do not touch the lamp at any time. Use a soft cloth. Oil from the skin may damage lamp.
6. Do not operate luminaire fitting with a missing or damaged cover.

LAMP INSTALLATION/REPLACEMENT:

CAUTION: Do not exceed maximum wattage marked on luminaire label.

1. To prevent electrical shock, disconnect transformer from electrical supply before service.
2. Unscrew the shade connector to expose the socket.
3. Replace lamp with correct wattage and type marked on fixture label.
4. Re-install the shade connector back to the Cone.

NOTE: DO NOT touch lamp with bare hands. Always use soft cloth or the plastic wrapping (if available) from lamp to handle the lamp. Halogen lamps must be protected from moisture and dust at all times.