

CRYST RAMA



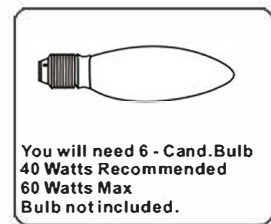
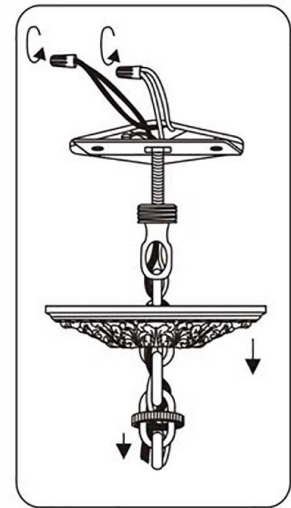
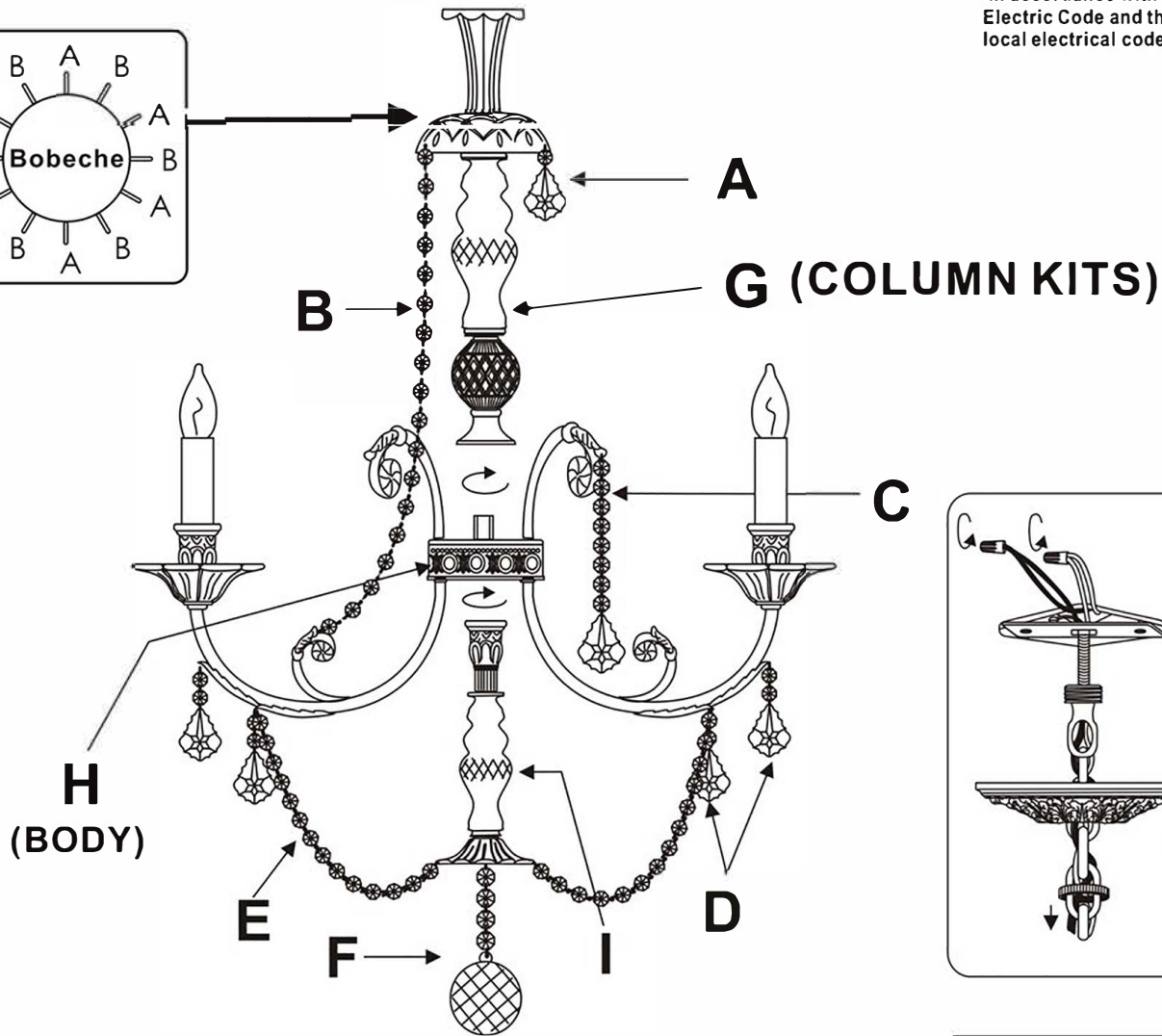
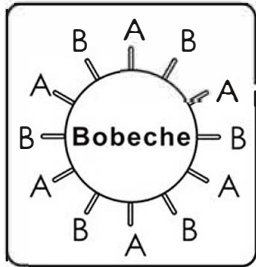
1958

95 Cantiague Rock Road, Westbury NY 11590
 ph:516.931.9090 fax: 516. 931.1254
 info@crystorama.com www.crystorama.com

MODEL#:5116 ASSEMBLY AND DRESSING INSTRUCTIONS



All electrical components must be installed by a licensed electrician in accordance with the National Electric Code and the appropriate local electrical codes.



- A= (20/62-2.5"+1 Jewel)*6pcs (Every other pin hole.)
- B= (19 Jewels Strand)*6pcs (Every other pin hole.)
- C= (20/75-3" + 8 Jewels)*6pcs
- D= (20/75-3" + 2 Jewels)*12pcs
- E= (16 Jewels Strand)*6pcs
- F= (1x40mm Ball + 6 Jewels)*1pc

ASSEMBLY STEPS:

- 1) G ———→ H
- 2) I ———→ H
- 3) A.B.C.D.E.F ———→ H