

63" PASCAL ACRYLIC OVAL TUB

Cat. No.
ATOVN63EIG-XX



L: 62-3/4"
W: 29-1/4"
H: 23-1/4"

Water depth: 17-1/2" to top of tub
Water depth: 14-1/4" to overflow
Overflow hole diameter: 3" x 1/2"
Center of drain to back of rim: 9-1/2"
Bottom of drain to floor: 3-3/4"
Bathing well to floor: 4-3/4"
Sitting area: 16"

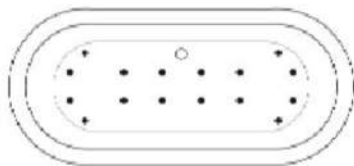
The following is recommended for ATOVN63EIG-WH:

- Faucets: part # 7082, or #7088
- Rigid, freestanding supplies: part #4502
- Freestanding filler: part #7902 or #7934 (Supplies included with filler)



For easier installation we recommend use of 5598-ITD Easy Install Rough In Kit

Gallon Capacity with OF: 61
Shipping Weight: 140 lbs.
Empty Weight: 80 lbs.
Filled Weight with OF: 589 lbs.



(Air jet configuration if system is added, more info on page 2.)

Dimensions of fixture are nominal and specifications subject to change without notice.

Features:

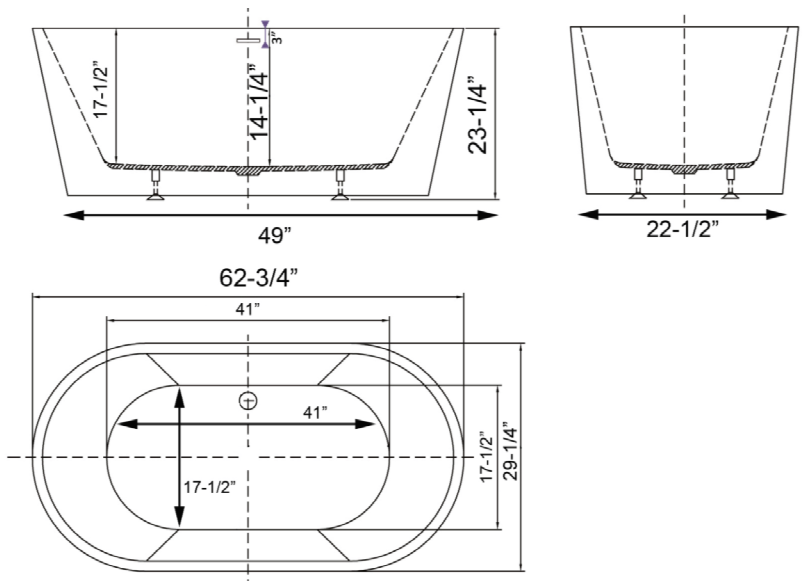
- ▶ Acrylic construction for lighter weight
- ▶ Sleek contemporary design
- ▶ Drain and overflow covers included(available in 6 finishes)
- ▶ Rim thickness: 1-1/2"
- ▶ Overflow slot with integrated drain
- ▶ Drain included
- ▶ No faucet holes
- ▶ Includes build-in adjusters
- ▶ Angle slope of tub: 59°
- ▶ Tub is thoroughly inspected before shipment
- ▶ IAMPO certified
- ▶ Option to add insulation between tub walls available
- ▶ **New:** Air jet system now available, more info on page 2



Finishes:

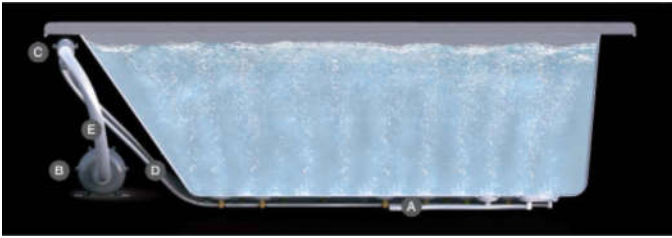
- WT White
- CP Polished Chrome
- BN Brushed Nickel
- PN Polished Nickel
- ORB Oil Rubbed Bronze
- PB Polished Brass

Custom Colors Available (inside of tub is always white enamel):
Painted bathtubs are considered "special order" and are not returnable



BATHTUB AIR JET KIT

Cat. No.
AIR KIT 1, AIR KIT 2



- A** AIR JET - Bottom air jets for maximum bubble action.
- B** BLOWER - The heart of the massage system.
- C** MANIFOLD - Double back flow security prevention device.
- D** FLEXIBLE PVC HOISING - IAPMO certified.
- E** MAIN AIR INTAKE HOSE - High temperature and pressure resistant.

Air Kit is installed in tub before shipment

Features:

- ▶ 750 Watt blower motor operates system
- ▶ 300 Watt air heater warms air
- ▶ System powered by 120V
- ▶ 16 brass air jets placed in bottom of tub
- ▶ Each air jet has 24 holes
- ▶ Air jet caps available in white (AIR KIT 1) or black (AIR KIT 2)
- ▶ Includes 1 1/4" x 3' main air hose plus 1 1/4" x 9' extension hose
- ▶ Automatic system purge after each use
- ▶ Automatic safety timer turns off system after 20 minutes
- ▶ Includes water tight remote control
- ▶ Compatible with most acrylic, copper and resin tubs with no feet
- ▶ Not available with cast iron tubs or tubs with feet

INSIDE TUB VIEW - WILL VARY BY TUB DESIGN

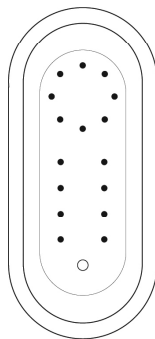


Air Jet

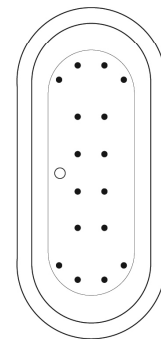


Remote

Oval bathtub
Sample jet configuration

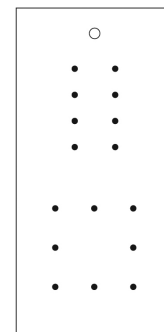


with end drain

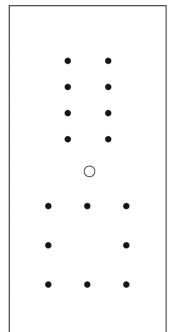


with center drain

Rectangular bathtub
Sample jet configuration

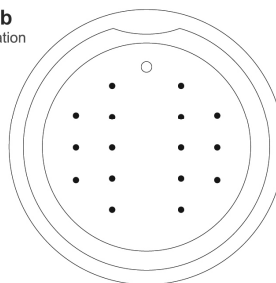


with end drain



with center drain

Round bathtub
Sample jet configuration



These diagrams are general representations. Jet placement may vary dependent on tub shape

Features:

(16) Maxi Air Jets



Elbows for air jets



Tees for air jets